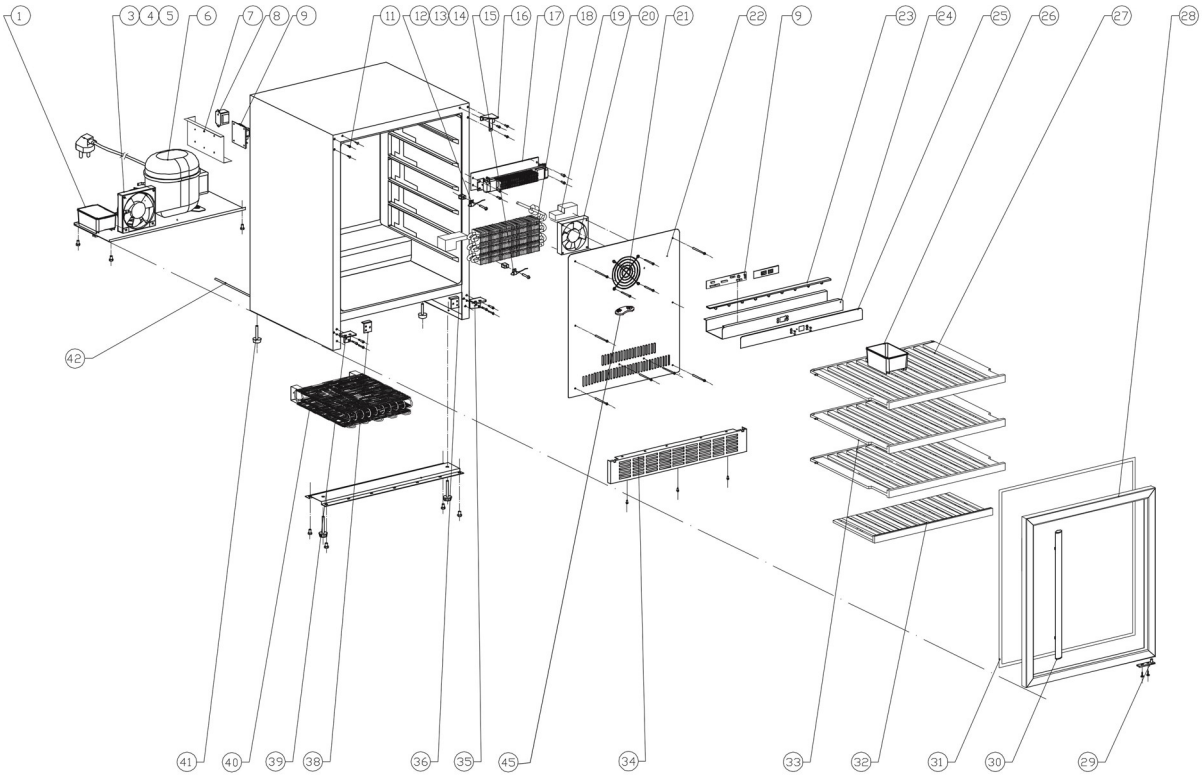


16117 / TFW160S

| Position | ItemNo | Description |
|----------|--------|--|
| 01 | 11597 | Water Tank |
| 03 | 13363 | Condenser Fan Dc1225B |
| 04 | 13504 | Fan Cover |
| 05 | 13498 | Fan Brackets |
| 06 | 11743 | Compressor JT1080Y |
| 07 | 13880 | PCB Cover |
| 08 | 13714 | Transformer |
| 09 | 13877 | PCB Board |
| | 41621 | Thermostat PCB Power Board from 2021 |
| | 41625 | Thermostat PCB Power Board from 2021 |
| 10 | 41622 | Thermostat PCB Red Display Board from 2021 |
| | 41623 | Thermostat PCB White Display Board from 2021 |
| 11 | 10046 | Decorative Nail |
| | 12973 | Top Hinge Left |
| 12 | 15154 | Stop For Shelves |
| 13 | 13725 | Wire Clamp |
| 14 | 13907 | Sensor |
| 15 | 13908 | Sensor |
| 16 | 12977 | Top Hinge Module Right |
| 17 | 13288 | PTC Heater |
| 18 | 14250 | Evaporator |
| 19 | 33620 | Evaporator Foam |
| 20 | 13436 | Evaporator Fan Dc1225S |
| 21 | 13430 | Evaporator Fan Cover |
| | 13503 | Fan Cover |
| 22 | 13503 | Fan Cover |
| 23 | 15578 | LED Light |
| 24 | 13811 | Control Panel |
| 25 | 10959 | Display Panel |
| 26 | 11617 | Water Tray Clear |
| 27 | 15252 | Wooden Shelf A6A (Top) |
| 28 | 11904 | Door |
| 29 | 11946 | Door Axis |
| 30 | 12674 | Handle |
| 30.2 | 12584 | Gasket |
| 31 | 12041 | Door Gasket |
| 32 | 15254 | Wooden Shelf G (Bottom) |
| 33 | 15251 | Wooden Shelf A6 (Middle) |
| 34 | 10950 | Decorative Frame |
| 35 | 10826 | Bottom Grill Hexagonal |
| | 12896 | Lower Hinge Module |
| 36 | 12903 | Lower Hinge Support Right |
| 38 | 12584 | Gasket |
| | 12902 | Lower Hinge Support Left |
| 39 | 12893 | Lower Hinge Left |
| 40 | 14111 | Condenser |
| 41 | 14554 | Adjustable Feet |
| 42 | 10372 | Air Pipe |
| 44 | 12972 | Top Hinge Left |
| 45 | 10009 | Charcoal Filter |

16117 / TFW160S



| | |
|--|--------------|
| TEFCOLD  | Date: 201208 |
| Model: TFW160S | Rev. no.: 02 |
| Exploded view | Rev. by: rfj |
| Drawing no.: | |